



4 Dane Ghyll Barrow In Furness LA14 4PZ

Offers In The Region Of £695,000

An impressive detached family home, fully refurbished to an exceptional standard, set within a highly sought-after residential area. The property benefits from a self-contained, separate annex bungalow - ideal for multi-generational living or guests. Occupying approximately two-thirds of an acre, the home is surrounded by extensive landscaped gardens and a private woodland area, offering both space and seclusion. Combining high-quality modern finishes with generous outdoor grounds, this outstanding property provides a rare opportunity for versatile, luxury family living in a prime location.



Entrance To Main House And Annexe

The floor plan has been carefully designed to offer exceptional versatility, combining a substantial two-storey family home with a fully self-contained bungalow annexe. The arrangement allows for multi-generational living and guest accommodation, all while maintaining clear separation and privacy between the two dwellings. The entrance hall in the middle splits the two dwellings.

MAIN HOUSE

Living Room

The living room is a welcoming and spacious area, designed with an open-plan layout that flows seamlessly into all rooms. The wood flooring throughout this space creates a sense of continuity and warmth, while the neutral walls provide a fresh, versatile backdrop for any décor style.

Sitting Area

French doors open directly into the garden from the sitting area, connecting the interior living spaces to the outdoor area. This feature not only brings in more light but also encourages a seamless transition from indoor to outdoor living.

Dining Room

The pendant light hanging above the dining area adds a touch of elegance, providing both functional and aesthetic lighting. This design element carries through into the kitchen, where another pendant light hangs above the kitchen island, enhancing the space with an extra layer of light and visual interest.

Kitchen

The kitchen boasts a large, central island with beautiful quartz worktops, providing both a functional workspace and a stylish focal point. The island serves as a gathering place for family and guests while offering ample room for food prep or casual meals. The kitchen is fully equipped with appliances, including a dishwasher, an induction hob, and an integrated fridge, alongside many other modern conveniences to make daily living more efficient. The white shaker-style kitchen units, complimented by gold hardware, create a timeless and elegant look that feels both contemporary and classic. You can gain access into the garage from here.

Conservatory

The conservatory offers stunning woodland views that provide a sense of tranquillity. Large windows on all sides ensure that the space is flooded with natural light, making it the perfect spot to relax. With the neutral walls and wood flooring that continues from the living areas, the conservatory feels like an extension of the open-plan space, blending seamlessly with the rest of the home.

Garage

The attached garage is a practical and modern addition to the property. It features a 7kW EV charger, making it ideal for homeowners with electric vehicles, ensuring that you have the convenience of charging your car at home. The garage also benefits from a remote-operated garage door, allowing for easy, hands-free access.

Ground Floor Shower Room

At the rear of the entrance hallway, connecting the two dwellings, is a modern fitted three-piece shower room. This stylish bathroom is finished to a high standard, offering both functionality and luxury. The marble-effect cladding on the walls and the marble-effect tiled floors give the room a sleek and sophisticated feel. The shower room features a walk-in shower, a bowl vanity sink, paired with a WC.

First Floor Of Main House

The first floor of the home is finished with neutral carpeting throughout, creating a warm and comfortable atmosphere in all the bedrooms. The neutral walls continue the clean, fresh aesthetic seen throughout the home, allowing for easy personalization and making the space feel inviting and serene.

Master Bedroom

The master bedroom is a standout feature of the first floor. Generously sized, it offers ample room for both relaxation and functional living. One of the key highlights of this room is the extra space that can be used as a dressing room, offering the perfect area for additional storage or a dedicated dressing area. The master bedroom is positioned at the rear of the house, giving it a peaceful, private atmosphere and offering views over the rear garden.

Bedroom Two

Bedroom two is a spacious double bedroom, offering ample space for a bed and additional furnishings. It is thoughtfully designed with built-in storage. This bedroom enjoys views overlooking the garden. The natural light streaming in from the windows enhances the room's airy and inviting feel, making it a perfect space for rest or as a guest room.

Bedroom Three

Bedroom three is also a well-sized double bedroom. Like bedroom two, it benefits from built-in storage, which helps to keep the room tidy and organized. Its size and design ensure comfort and practicality, making it a welcoming and functional part of the home.

Bathroom

The four piece family bathroom suite is finished to a high standard with marble-tiled walls and marble-effect floors, creating a luxurious, timeless look. The gold elements, featured on the vanity sink, faucets, and other fixtures, contrast beautifully against the neutral marble tones. The suite comprises of a walk-in shower, a WC, a vanity bowl sink and a free standing bath.

ANNEXE

Living Room

The living room in the annexe offers a cozy and inviting space, though with a more traditional feel compared to the main house. The room features a charming bay window, which not only adds character to the space but also floods the room with natural light, making it bright and airy. The neutral carpets and walls contribute to a calm and versatile atmosphere. The room features an electric fire to the centre.

Kitchen

The kitchen is functional and well-equipped, featuring light grey, flat-fronted, handleless wall and base units, giving it a sleek, modern look. The grey laminate flooring compliments the cabinetry. The kitchen comes with a built-in electric hob and oven. Additionally, the kitchen benefits from a utility room.

Utility

The utility offers extra storage and separate space, with a , making the annexe kitchen both efficient and convenient, and gives access to the garden.

Dining Room

The dining room is a comfortable and inviting space, with neutral carpeting. The room is well-proportioned, offering plenty of space for a dining table and chairs. A lovely feature of this room is the French doors, which open into the conservatory. These doors not only allow natural light to flow into the dining area but also provide easy access to the conservatory, where you can enjoy beautiful views of the garden and surrounding area.

Conservatory

The conservatory is an ideal spot to relax and enjoy the stunning views that surround.

Bedroom One

Bedroom one is a comfortable, well-sized room, with neutral carpeting. A standout feature of this bedroom is the separate dressing room. This dedicated area enhances the overall functionality and comfort of the room. It provides a lovely, practical extension of the bedroom.

Bedroom Two

Bedroom two is a spacious double bedroom. The room is designed to be both comfortable and functional, making it an ideal space for guests, a home study, or even a second bedroom for family use. One of the key features of this room is its beautiful garden views, allowing natural light to fill the room and creating a tranquil atmosphere.

Bathroom

The bathroom comprises of a walk-in shower, a WC, a pedestal sink and a bath and has been decorated neutrally with vinyl flooring.

External

The property is set within extensive gardens, offering a beautiful and expansive outdoor space that enhances the overall appeal of the home. The gardens are thoughtfully landscaped, with plenty of room for outdoor activities, relaxation, or entertaining. Whether you're enjoying a peaceful afternoon in the sun or hosting a gathering, the gardens provide an ideal setting to enjoy the outdoors in complete privacy and tranquillity. Beyond the gardens, the property is surrounded by a woodland area, adding to the sense of seclusion and natural beauty. The woodland offers a serene, wooded backdrop, perfect for exploring, walking, or simply enjoying the view. It creates a sense of peace and connection to nature, making the outdoor space feel like an oasis of calm.

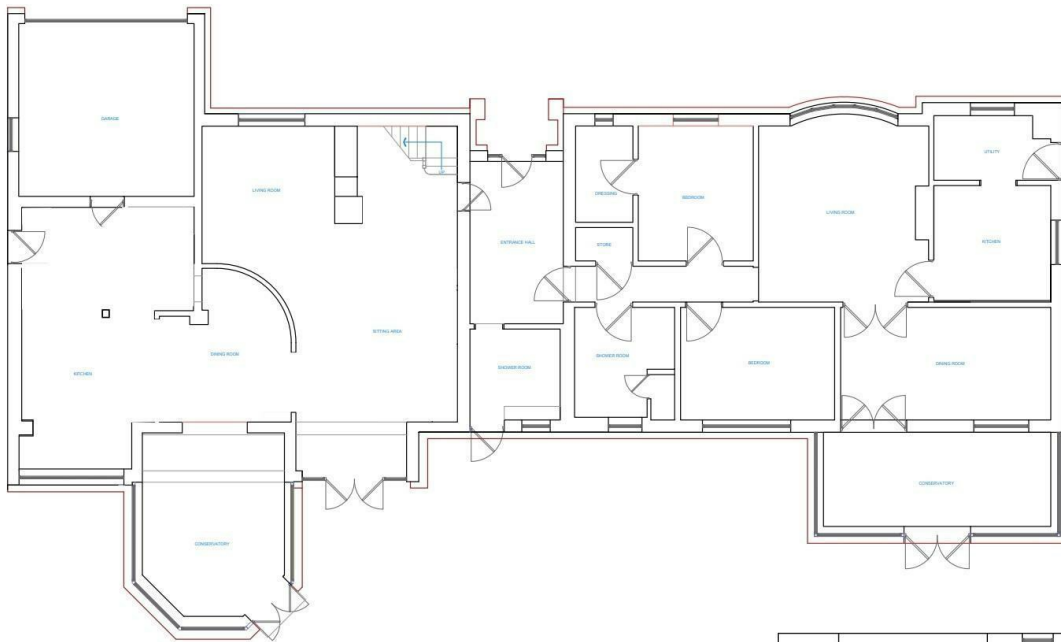












Existing First Floor Plan



Corrie and Co aim to sell your property at the best possible price in the shortest possible time. We have developed a clear marketing strategy to ensure that your property is fully exposed to the local, regional and national market place and we are confident that we can provide a marketing service second to none. Our Sales Team offer:

- Full colour contemporary sales literature with floorplans
- A full programme of local / regional advertising and promotion on the Corrie and Co and Rightmove websites
- 24/7 promotion in our Barrow, Ulverston and Millom offices
- Professional viewing service and prompt feedback
- Experienced, friendly staff
- Eye catching 'For Sale' board

To ensure your move is looked after, we can help you with an Energy Performance Certificate and arrange a free mortgage and finance review. We also provide a competitive No Sale – No Fee conveyancing service with well known and trusted local solicitors. Our valuation and sales advice is impartial, completely free with no obligation.

Unlike many High Street Estate Agency chains, Corrie and Co are wholly independent and can therefore recommend the mortgage and lender that is most suitable for your needs. Our aim is to provide quality advice and expertise at all times so that you can make an informed decision every step of the way.

Energy Efficiency Rating		Current	Potential
	Very energy efficient - lower running costs		
	A		
	B		
	C		
	D		
	E		
	F		
	G		
	Not energy efficient - higher running costs		
England & Wales		EU Directive 2002/91/EC	
Environmental Impact (CO ₂) Rating		Current	Potential
	Very environmentally friendly - lower CO ₂ emissions		
	A		
	B		
	C		
	D		
	E		
	F		
	G		
	Not environmentally friendly - higher CO ₂ emissions		
England & Wales		EU Directive 2002/91/EC	